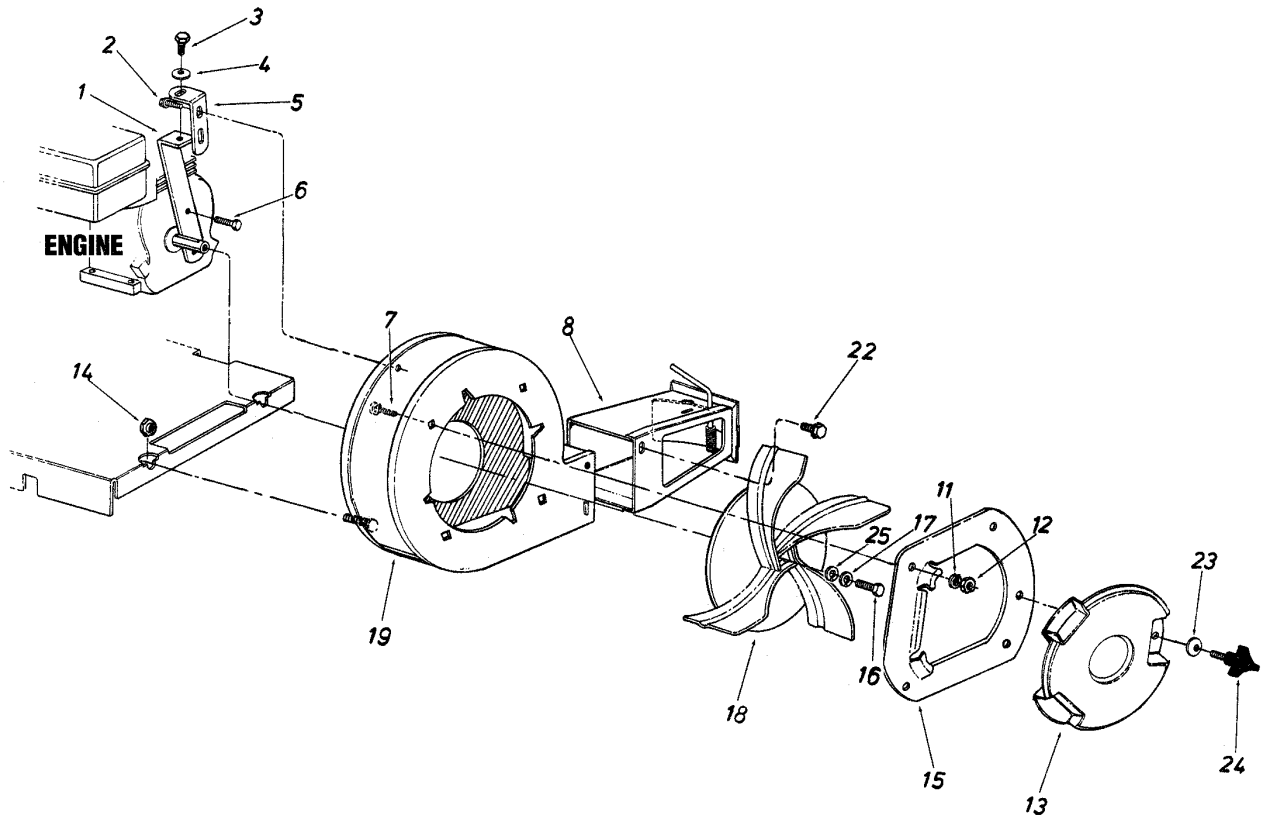
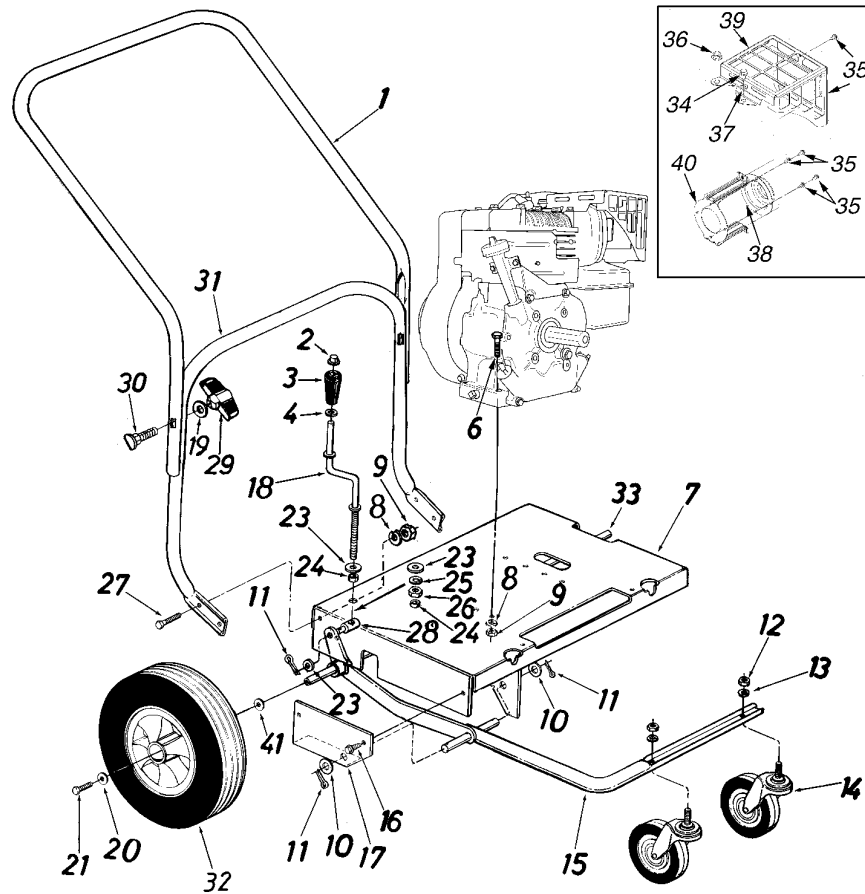


SECTION 7: PARTS LIST FOR MODEL 654



Ref. No.	Part No.	Part Description	Ref. No.	Part No.	Part Description
1.	14540B	Engine Housing Brace Assembly	14.	711-0758	Hex Shoulder Nut .50"
2.	710-0607	Hex Self Tapping Screw 5/16 x .5	15.	14563A	Nozzle Plate Assembly
3.	710-1260A	Hex Bolt 5/16-18 x .75	16.	710-1254	Hex Bolt 3/8-24 x 1.25
4.	736-0170	Special L-Washer 5/16" x.88 OD	17.	736-0217	Lock Washer 3/8
5.	14541	Right Angle Bracket	18.	681-0075A	Air Vane Plate Assembly
6.	710-0627	Hex Locking Bolt 5/16-24 x .75	19.	14496B	Blower Housing Assembly
7.	710-0260A	Carriage Bolt 5/16-18 x .62	22.	710-0259	Hex Sems Bolt 5/16-18 x .62
8.	14479	Directional Discharge Assembly	23.	736-0242	Bell Washer .34 ID x .87 OD
11.	736-0119	Lock Washer 5/16	24.	710-3008	Screw 5/16-18 x.75
12.	712-0267	Hex Nut 5/16-18	25.	736-0247	Flat Washer
13.	731-0608	Blower Guard			

Model 654



Ref. No.	Part No.	Part Description	Ref. No.	Part No.	Part Description
1.	749-0784	Upper Handle	23.	736-0300	Flat Washer.38 ID x.57 OD
2.	726-0100	Push Nut 3/8	24.	750-0528	Spacer.382 ID x.50 OD x.180Lg
3.	720-0171	Crank Knob	25.	736-0169	Lock Washer 3/8 ID
4.	736-0117	Flat Washer.385 ID x.62 OD	26.	712-0354	Hex Nut 3/8-8
6.	710-0805	Hex Bolt 5/16-18 x 1.50	27.	710-0118	Hex Bolt 5/16-18 x.75
7.	16453	Engine Mounting Frame Assembly	28.	711-0797	Ferrule
8.	736-0119	Lock Washer 5/16 ID	29.	720-0241	Hand Knob
9.	712-0267	Hex Nut 5/16-18	30.	710-1174	Carriage Bolt 5/16-18 x 2.0
10.	736-0187	Flat Washer.63 ID x 1.25	31.	749-0785	Lower Handle
11.	714-0115	Cotter Pin	32.	734-1035	Wheel Assembly 12 x 3
12.	712-0206	Hex Nut 1/2-13	33.	738-0185	Rear Axle
13.	736-0921	Lock Washer 1/2	34.	710-0599	Self Tap Screw 1/4-20 x.5 †
14.	734-1036	Swivel Caster Wheel 5" Dia x 1.25	35.	710-1502	Screw 8-18 x.375 †
15.	16273	Caster Arm Assembly	36.	712-3004A	Hex Lock Nut 5/16-18 †
16.	710-0726	Hex Washer Screw 5/16x.75	37.	736-0329	Lock Washer †
17.	14529	Caster Arm Bracket	38.	751-0447	Deflector †
18.	747-0542	Height Adjustment Crank	39.	751-0632	Muffler Guard †
19.	736-0451	Saddle Washer.32 ID x.93 OD	40.	751-0646	Muffler Guard Bracket †
20.	736-0159	Flat Washer.34 ID x.87 OD	41.	736-0162	Flat Washer
21.	710-0170	Hex Lock Bolt 5/16-24 x.64	42.	712-3004A	Hex Lock Nut 5/16-18

† If Equipped

NOTES

MANUFACTURER'S LIMITED WARRANTY FOR:



The limited warranty set forth below is given by Troy-Bilt LLC with respect to new merchandise purchased and used in the United States, its possessions and territories.

"Troy-Bilt" warrants this product against defects in material and workmanship for a period of two (2) years commencing on the date of original purchase and will, at its option, repair or replace, free of charge, any part found to be defective in materials or workmanship. This limited warranty shall only apply if this product has been operated and maintained in accordance with the Operator's Manual furnished with the product, and has not been subject to misuse, abuse, commercial use, neglect, accident, improper maintenance, alteration, vandalism, theft, fire, water, or damage because of other peril or natural disaster. Damage resulting from the installation or use of any part, accessory or attachment not approved by Troy-Bilt for use with the product(s) covered by this manual will void your warranty as to any resulting damage.

Normal wear parts are warranted to be free from defects in material and workmanship for a period of thirty (30) days from the date of purchase. Normal wear parts include, but are not limited to items such as: batteries, belts, blades, blade adapters, grass bags, rider deck wheels, seats, snow thrower skid shoes, shave plates, auger spiral rubber and tires.

HOW TO OBTAIN SERVICE: Warranty service is available, WITH PROOF OF PURCHASE, through your local authorized service dealer. To locate the dealer in your area, check your Yellow Pages, or contact Troy-Bilt LLC at P.O. Box 361131, Cleveland, Ohio 44136-0019, or call 1-800-520-5520 or 1-330-558-7220, or log on to our Web site at www.troybilt.com.

This limited warranty does not provide coverage in the following cases:

- a. The engine or component parts thereof. These items may carry a separate manufacturer's warranty. Refer to applicable manufacturer's warranty for terms and conditions.
- b. Log splitter pumps, valves, and cylinders have a separate one year warranty.
- c. Routine maintenance items such as lubricants, filters, blade sharpening, tune-ups, brake adjustments, clutch adjustments, deck adjustments, and normal deterioration of the exterior finish due to use or exposure.
- d. Service completed by someone other than an authorized service dealer.
- e. Troy-Bilt does not extend any warranty for products sold or exported outside of the United States, its possessions and territories, except those sold through Troy-Bilt's authorized channels of export distribution.
- f. Replacement parts that are not genuine Troy-Bilt parts.
- g. Transportation charges and service calls.

No implied warranty, including any implied warranty of merchantability of fitness for a particular purpose, applies after the applicable period of express written warranty above as to the parts as identified. No other express warranty, whether written or oral, except as mentioned above, given by any person or entity, including a dealer or retailer, with respect to any product, shall bind Troy-Bilt. During the period of the warranty, the exclusive remedy is repair or replacement of the product as set forth above.

The provisions as set forth in this warranty provide the sole and exclusive remedy arising from the sale. Troy-Bilt shall not be liable for incidental or consequential loss or damage including, without limitation, expenses incurred for substitute or replacement lawn care services or for rental expenses to temporarily replace a warranted product.

Some states do not allow the exclusion or limitation of incidental or consequential damages, or limitations on how long an implied warranty lasts, so the above exclusions or limitations may not apply to you.

In no event shall recovery of any kind be greater than the amount of the purchase price of the product sold. **Alteration of safety features of the product shall void this warranty.** You assume the risk and liability for loss, damage, or injury to you and your property and/or to others and their property arising out of the misuse or inability to use the product.

This limited warranty shall not extend to anyone other than the original purchaser or to the person for whom it was purchased as a gift.

HOW STATE LAW RELATES TO THIS WARRANTY: This limited warranty gives you specific legal rights, and you may also have other rights which vary from state to state.

IMPORTANT: Owner must present Original Proof of Purchase to obtain warranty coverage.