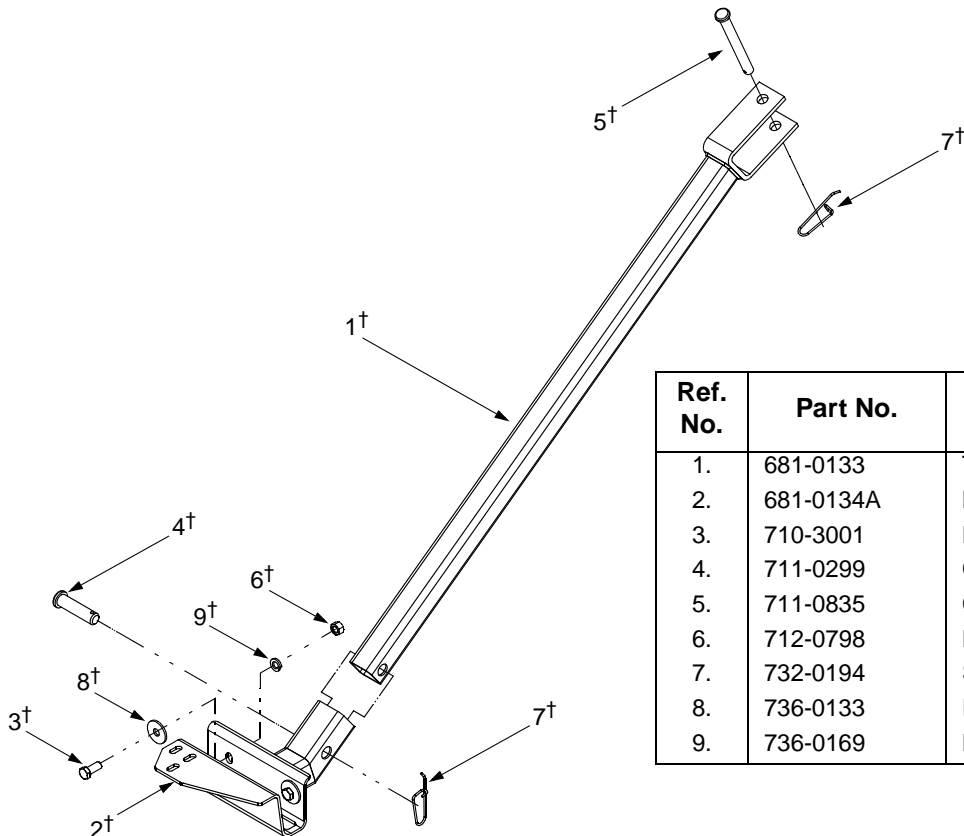
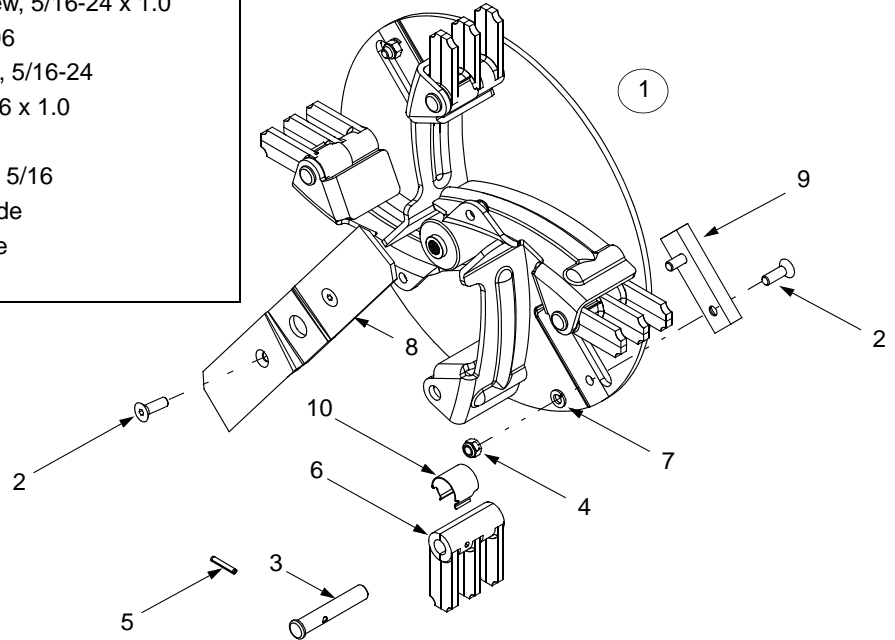


## SECTION 7: PARTS LIST FOR MODELS CS4265 & CS4210

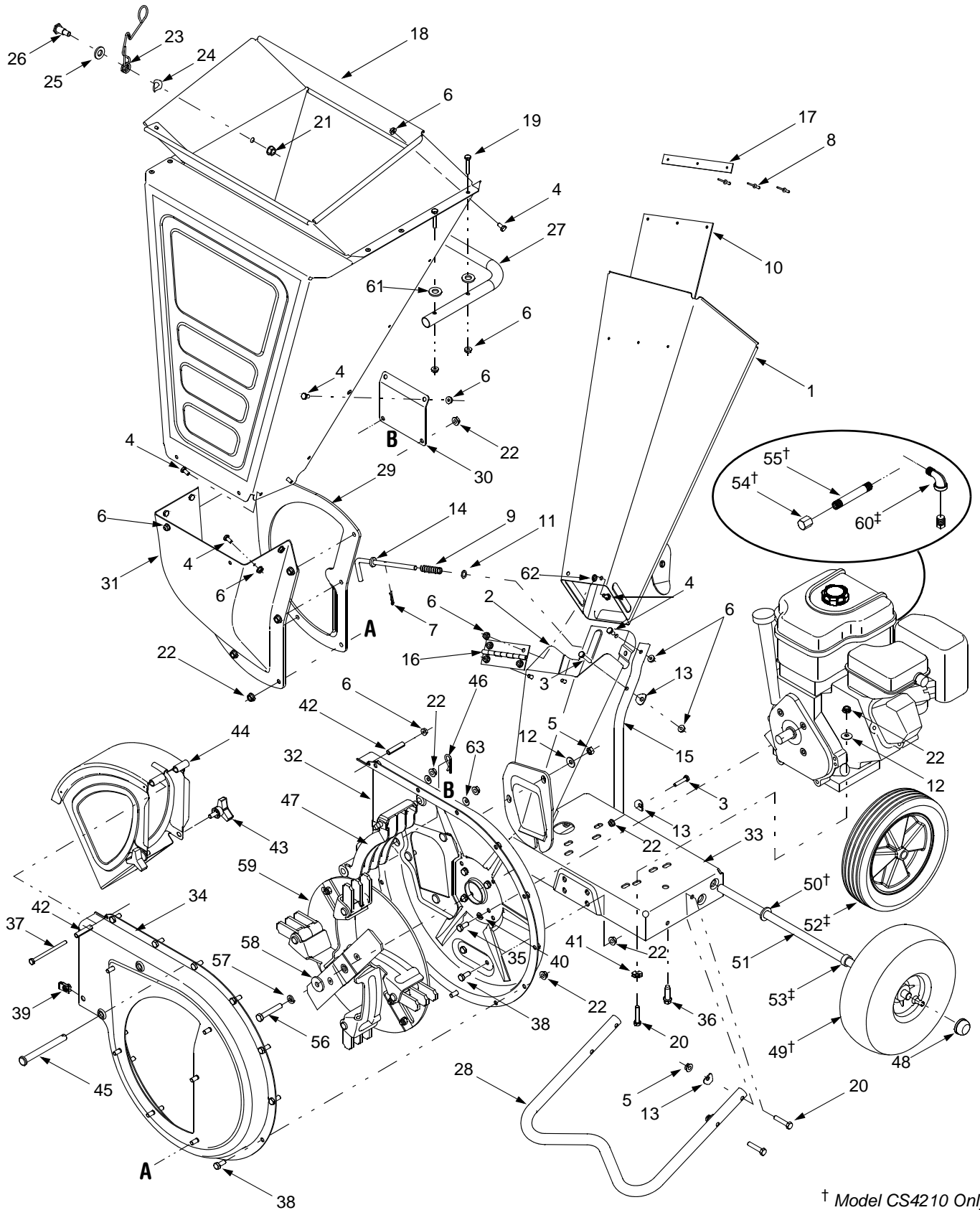
Ref. No.	Part No.	Part Description
1.	681-04009	Impeller Assembly Complete
2.	710-1054	Machine Screw, 5/16-24 x 1.0
3.	711-0833B	Clevis Pin, .496
4.	712-0411	Hex Lock Nut, 5/16-24
5.	715-0166	Spiral Pin, .156 x 1.0
6.	719-0329	Flail
7.	736-0119	Lock Washer, 5/16
8.	742-04050	Shredder Blade
9.	742-0544	Chipper Blade
10.	781-0735	Retainer Clip



Ref. No.	Part No.	Part Description
1.	681-0133	Tongue Hitch Mount
2.	681-0134A	Base Hitch Mount
3.	710-3001	Hex Cap Screw, 3/8-16 x .88
4.	711-0299	Clevis Pin, .625 x 2.4
5.	711-0835	Clevis Pin, .50 x 4.62
6.	712-0798	Hex Nut, 3/8
7.	732-0194	Spring Pin
8.	736-0133	Flat Washer, .411 x 1.25 x 1.0
9.	736-0169	Lock Washer, 3/8

† Model CS4210 Only

# Models CS4265 & CS4210



† Model CS4210 Only  
‡ Model CS4265 Only

## Models CS4265 & CS4210

Ref. No.	Part No.	Part Description	Ref. No.	Part No.	Part Description
1.	681-04006	Upper Chipper Chute Assembly	34.	681-04002	Outer Flail Housing Assembly
2.	681-04007	Lower Chipper Chute Assembly	35.	710-0157	Hex Cap Screw, 5/16-24 x.75
3.	710-0106	Hex Cap Screw, 1/4-20 x 1.25	36.	710-0502A	Hex Sems Screw, 3/8-16 x 1.25
4.	710-3013	Hex Cap Screw, 1/4-20 x.5	37.	710-0825	Hex Cap Screw, 1/4-20 x 3.75
5.	712-3010	Hex Nut, 5/16-18	38.	710-3025	Hex Cap Screw, 5/16-18 x.625
6.	712-3027	Hex Lock Nut 1/4-20	39.	726-0211	U-Nut, 5/16-18
7.	714-0104	Cotter Pin	40.	736-0119	Lock Washer, 5/16
8.	728-0175	Pop Rivet	41.	736-0170	Special Lock Washer, 5/16
9.	732-0306A	Compression Spring,.531 x 1.75	42.	750-0793	Hinge Spacer,.265 x.380 x 1.66
10.	735-0249A	Chute Flap	43.	681-0048	Knob, 5/16-18
11.	736-0140	Flat Washer	44.	681-0094	Chute Deflector Assembly
12.	736-0242	Bell Washer.340 ID x.872 OD	45.	711-0835	Clevis Pin,.50 x 4.62
13.	736-0451	Washer,.320 ID x.93 OD	46.	714-0149B	Internal Cotter Pin
14.	747-04163	Lock Rod	47.	719-04070	Shredder Screen
15.	749-1004	Chipper Chute Support	48.	726-0214	Push Cap, 5/8
16.	781-04032	Chipper Chute Hinge	49.	734-1845	Wheel, 10 x 4 x 4
17.	781-0633	Chute Flap Strip	50.	736-0366	Flat Washer,.625 x 1.0
18.	681-04011	Shredder Hopper Assembly	51.	738-0813	Axle, 22.47"(CS4210)
19.	710-0809	Hex Cap Screw, 1/4-20 x 1.250		738-0814	Axle, 21.21"(CS4265)
20.	710-0805	Hex Cap Screw, 5/16-18 x 1.50	52.	734-1600	Wheel, 10 x 2.5
21.	712-0431	Flange Lock Nut, 3/8-16	53.	750-0786	Spacer,.64 x.88 x.38
22.	712-3004A	Flange Lock Nut, 5/16-18	54.	737-0132	Oil Drain End Cap
23.	732-04167	Torsion Spring	55.	737-0298	Oil Drain Pipe
24.	736-0182	Spring Washer,.50 x 1.0 x.022	56.	710-1254	Hex Cap Screw, 3/8-24 x 2.25
25.	736-0326	Flat Washer,.50 x 1.0 x.0125	57.	736-0217	Lock Washer, 3/8
26.	738-0430	Shoulder Screw, 3/8-16,.50 x.685	58.	736-0247	Flat Washer,.406 x 1.25
27.	749-04103	Hopper Handle	59.	681-04009	Impeller Assembly
28.	749-04104	Tube Support			(See page 13 for Impeller Parts)
29.	781-04007	Shredder Plate	60.	737-0195	Elbow Fitting
30.	781-04027	Hopper Support Bracket	61.	736-0173	Flat Washer,.28 x.74 x.063
31.	781-04033	Inlet Guide	62.	726-0233	Push Nut,.25ID x.50OD
32.	681-0117	Inner Flail Housing Assembly	63.	726-0201	Speed Nut,.3125ID
33.	681-0183A	Frame Assembly (CS4210)	—	664-04023	Debris Collection Bag (Not Shown)
	681-0184A	Frame Assembly(CS4265)	—	723-0400	Safety Glasses

# MANUFACTURER'S LIMITED WARRANTY FOR:



The limited warranty set forth below is given by Troy-Bilt LLC with respect to new merchandise purchased and used in the United States, its possessions and territories.

"Troy-Bilt" warrants this product against defects in material and workmanship for a period of two (2) years commencing on the date of original purchase and will, at its option, repair or replace, free of charge, any part found to be defective in materials or workmanship. This limited warranty shall only apply if this product has been operated and maintained in accordance with the Operator's Manual furnished with the product, and has not been subject to misuse, abuse, commercial use, neglect, accident, improper maintenance, alteration, vandalism, theft, fire, water, or damage because of other peril or natural disaster. Damage resulting from the installation or use of any part, accessory or attachment not approved by Troy-Bilt for use with the product(s) covered by this manual will void your warranty as to any resulting damage.

Normal wear parts are warranted to be free from defects in material and workmanship for a period of thirty (30) days from the date of purchase. Normal wear parts include, but are not limited to items such as: batteries, belts, blades, blade adapters, grass bags, rider deck wheels, seats, snow thrower skid shoes, shave plates, auger spiral rubber and tires.

**HOW TO OBTAIN SERVICE:** Warranty service is available, WITH PROOF OF PURCHASE, through your local authorized service dealer. To locate the dealer in your area, check your Yellow Pages, or contact Troy-Bilt LLC at P.O. Box 361131, Cleveland, Ohio 44136-0019, or call 1-800-520-5520 or 1-330-558-7220, or log on to our Web site at [www.troybilt.com](http://www.troybilt.com).

This limited warranty does not provide coverage in the following cases:

- a. The engine or component parts thereof. These items may carry a separate manufacturer's warranty. Refer to applicable manufacturer's warranty for terms and conditions.
- b. Log splitter pumps, valves, and cylinders have a separate one year warranty.
- c. Routine maintenance items such as lubricants, filters, blade sharpening, tune-ups, brake adjustments, clutch adjustments, deck adjustments, and normal deterioration of the exterior finish due to use or exposure.
- d. Service completed by someone other than an authorized service dealer.

- e. Troy-Bilt does not extend any warranty for products sold or exported outside of the United States, its possessions and territories, except those sold through Troy-Bilt's authorized channels of export distribution.
- f. Replacement parts that are not genuine Troy-Bilt parts.
- g. Transportation charges and service calls.

**No implied warranty, including any implied warranty of merchantability of fitness for a particular purpose, applies after the applicable period of express written warranty above as to the parts as identified. No other express warranty, whether written or oral, except as mentioned above, given by any person or entity, including a dealer or retailer, with respect to any product, shall bind Troy-Bilt. During the period of the warranty, the exclusive remedy is repair or replacement of the product as set forth above.**

**The provisions as set forth in this warranty provide the sole and exclusive remedy arising from the sale. Troy-Bilt shall not be liable for incidental or consequential loss or damage including, without limitation, expenses incurred for substitute or replacement lawn care services or for rental expenses to temporarily replace a warranted product.**

Some states do not allow the exclusion or limitation of incidental or consequential damages, or limitations on how long an implied warranty lasts, so the above exclusions or limitations may not apply to you.

In no event shall recovery of any kind be greater than the amount of the purchase price of the product sold. **Alteration of safety features of the product shall void this warranty.** You assume the risk and liability for loss, damage, or injury to you and your property and/or to others and their property arising out of the misuse or inability to use the product.

This limited warranty shall not extend to anyone other than the original purchaser or to the person for whom it was purchased as a gift.

**HOW STATE LAW RELATES TO THIS WARRANTY:** This limited warranty gives you specific legal rights, and you may also have other rights which vary from state to state.

**IMPORTANT:** Owner must present Original Proof of Purchase to obtain warranty coverage.